

## C4CE Secretariat



### **Nicky Ison**

In 2011, Nicky Ison and Jarra Hicks formed Community Power Agency to help grow a vibrant community energy sector in Australia. In 2010, Nicky undertook a self-funded study tour of community energy projects across Europe. To date, Nicky has worked with and visited over 40 community energy projects across Australia and Europe. Nicky is the founder of the new Coalition for Community Energy, she also helped found and currently convenes the board of the Solar Citizens Community Campaign and works as a Senior Research Consultant at the Institute for Sustainable Futures (ISF) at the University of Technology, Sydney. While at ISF, Nicky has developed a detailed understanding of the National Electricity Market. Nicky holds a double degree in Environmental Engineering (Hons 1) and Arts (Environmental Studies) and has spent more than a decade working and volunteering in the community climate sector. In 2014, Nicky was recognised on the Australian Financial Review's 100 Women of Influence List.



### **Jarra Hicks**

Jarra has a professional background in community development, campaigning and renewable energy. She is a Founding Director of the Community Power Agency and spent two years as the Project Coordinator of Mount Alexander Community Wind in Central Victoria. She has also co-founded and worked for a range of community organisations and social enterprises, from food to energy, advocacy to banking. In 2010 and again in 2012 Jarra completed study tours of community renewable energy initiatives in North America and Europe and spent time as a volunteer renewable energy policy advisor in Delhi, India. Jarra has a first class honors degree in Development Studies from the University of Newcastle, she is also currently a PhD Candidate at the University of New South Wales.



### **Tom Nockolds**

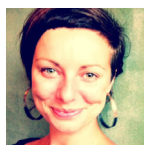
Tom has an extensive work history and a strong track record of success in various roles such as business development manager, project manager and operations manager. Tom has university qualifications in project management and a background in mechanical/manufacturing engineering. Tom is passionate about using his skills to bring people together so they can be more effective at making the world a better place. He's an active member of two community solar projects in Sydney, Pingala – Community Renewables for Sydney and Renewable Energy Inner West.

## Steering Group



### **Adam Blakester, Starfish Initiatives**

Adam Blakester is a sustainability specialist with a diverse career of national and international roles across the environmental, social, corporate and government sectors. Adam's strength is enabling transitions to new paradigms. This has been achieved through international work with Greenpeace on its mass-mobilisation strategy, NAPCAN's re-focus on children's wellbeing and creating child friendly communities; and currently in his role as Executive Director of Starfish, whose purpose is to contribute to the global transition to sustainability by enabling social change throughout rural and regional Australia and beyond. Adam has coordinated Farming the Sun, Australia's largest community solar energy initiative, and New England Wind which is working to establish NSW's first community-owned wind farm. Adam holds qualifications in commerce, law, facilitation, carbon management and leadership, and is an alumnus of Social Leadership Australia.



### **Taryn Lane, Embark and Hepburn Wind**

Taryn has extensive local and international community development experience and a BA in International Studies and a MA in Sustainability and Social Change. She has worked for Australia's first community-owned wind farm Hepburn Wind since 2010, delivering industry best standards in community engagement. Since 2012, Taryn has also been the communications and community liaison for Embark Australia, a not-for-profit set up to kickstart the community energy sector. Over the past decade, Taryn has worked in East Timor, Guatemala, Mexico and Australia, with NFPs, co-operatives and educational institutions. She is a fellow of the Centre for Sustainability Leadership's, Future Sustainability Leaders course as well as being a founding director of the Australian Wind Alliance.

(Continued ...)



## Steering Group (Continued)



### **Craig Memery, Alternative Technology Association**

Craig Memery has 10 years' experience in the field of renewable energy and related areas, with a focus on project management, education initiatives, stakeholder management and research. He has prepared and delivered Diploma-level renewable energy technology subjects and related courses. Since 2009 Craig has worked with ATA's Policy and Projects team, where his role is divided between (1) providing advice on renewable energy and energy efficiency to various community organisations as well as to government and the private sector, and (2) advocating on behalf of consumers and communities who benefit from sustainable energy technology and improved market efficiency, for improvements and reforms in the National Energy Market.



### **Bruce Thompson, Moreland Energy Foundation**

Bruce has a technical background in energy management and extensive experience in community partnership development, working for many years in advocacy roles for a national environment NGO. He holds a Masters degree in Engineering (Renewable Energy) and Graduate Certificate in Project Management. Bruce Thompson has been with MEFL for 9 years. In his current role as the Director of Major Projects for the Moreland Energy Foundation Bruce led the \$10 million Moreland Solar City Project, and is responsible for the establishment of MEFL's new flagship social enterprise Positive Charge working in partnership with local governments to reduce household emissions and energy costs through discounted energy efficiency products and tailored advice. Bruce was awarded the Brian Robinson Foundation Fellowship in 2007 for young environmental leadership and travelled to Europe to research community based decentralised energy and low-income energy efficiency programs.



### **Christina Kirsch, ClearSky Solar Investments and Clean Energy for Eternity**

Christina is a registered organisational psychologist and is consultant in the field of Organisational Change and Social Innovation. Christina holds a PhD in organisational and cross-cultural psychology from the University of Potsdam. She is the co-founder and director of the not-for-profit community renewable energy company ClearSky Solar Investments, which is operating various clean energy projects around Australia. Christina is currently involved in projects for major organisations, academic institutions and NGOs to develop collective impact assessments and shared measurement platforms. Christina is a member of the Australian Institute of Company Directors, the Australian Psychological Society, the College of Organisational Psychology and the Change Management Institute.



### **Paul Cruickshank, NSW Office of Environment and Heritage**

Paul Cruickshank is an environmental lawyer working with NSW Office of Environment and Heritage to encourage the development of large scale and community renewable energy projects. Paul has worked as CEO and Public Affairs manager for organisations as diverse as Greening Australia, Leightons and OTC, and recently (as Manager of Lismore Neighbourhood Centre) developed the nation's first multi-million dollar regional no interest loans scheme.



### **Edward Langham, Institute for Sustainable Futures, University of Technology, Sydney**

Ed is a Research Principal at the Institute for Sustainable Futures, UTS. He is an environmental scientist specialising in the economics, planning and policy associated with developing and delivering energy savings and distributed clean energy generation. His research on the interface between electricity grid management and consumer pursuit of local energy options has led him to close involvement in the community energy sector including the National Community Energy Strategy, Virtual Net Metering and the SSROC Renewable Energy Master Plan. Ed's career includes time with the Sustainable Energy Development Authority of NSW's (SEDA) solar program and advising Pacific government agencies on energy efficiency policy and renewable energy development. Ed is a member of Sydney's Pingala community renewable energy group.

