

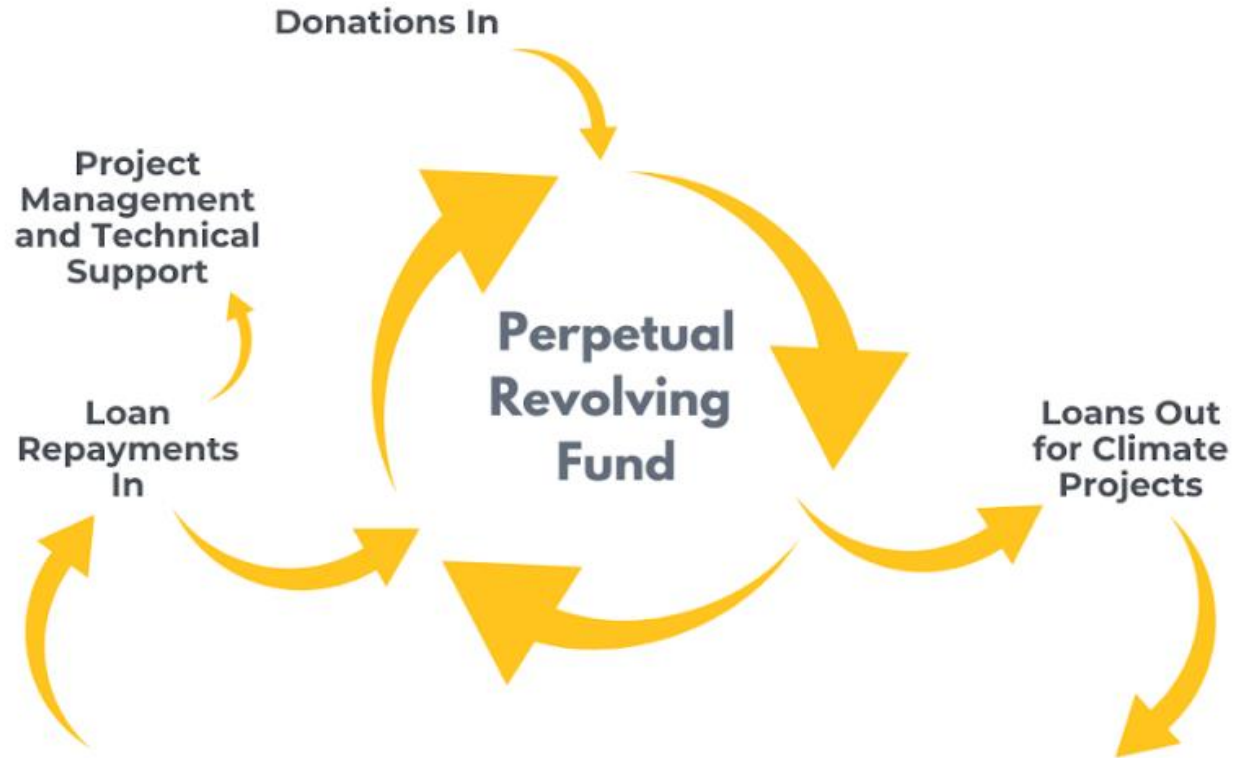
Our powerful revolving fund enables all Australians to help tackle the climate emergency by donating to projects that reduce carbon emissions immediately.

We provide interest-free loans to non-profits for projects including:

- Solar PV
- Electric Vehicles
- Energy Efficiency
- Getting off Gas

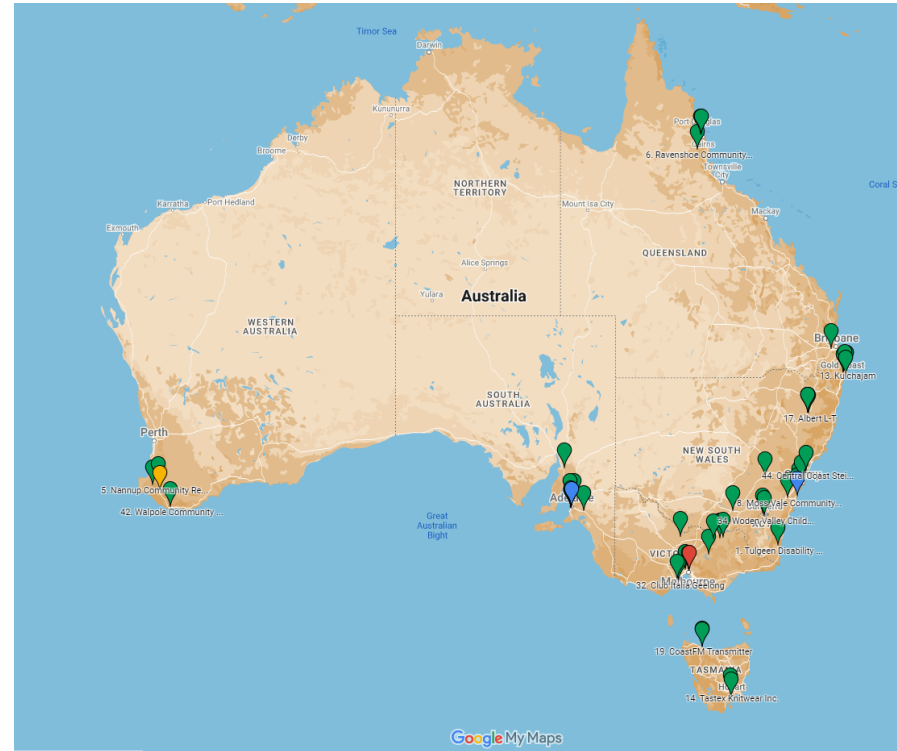


How Our Revolving Fund Works



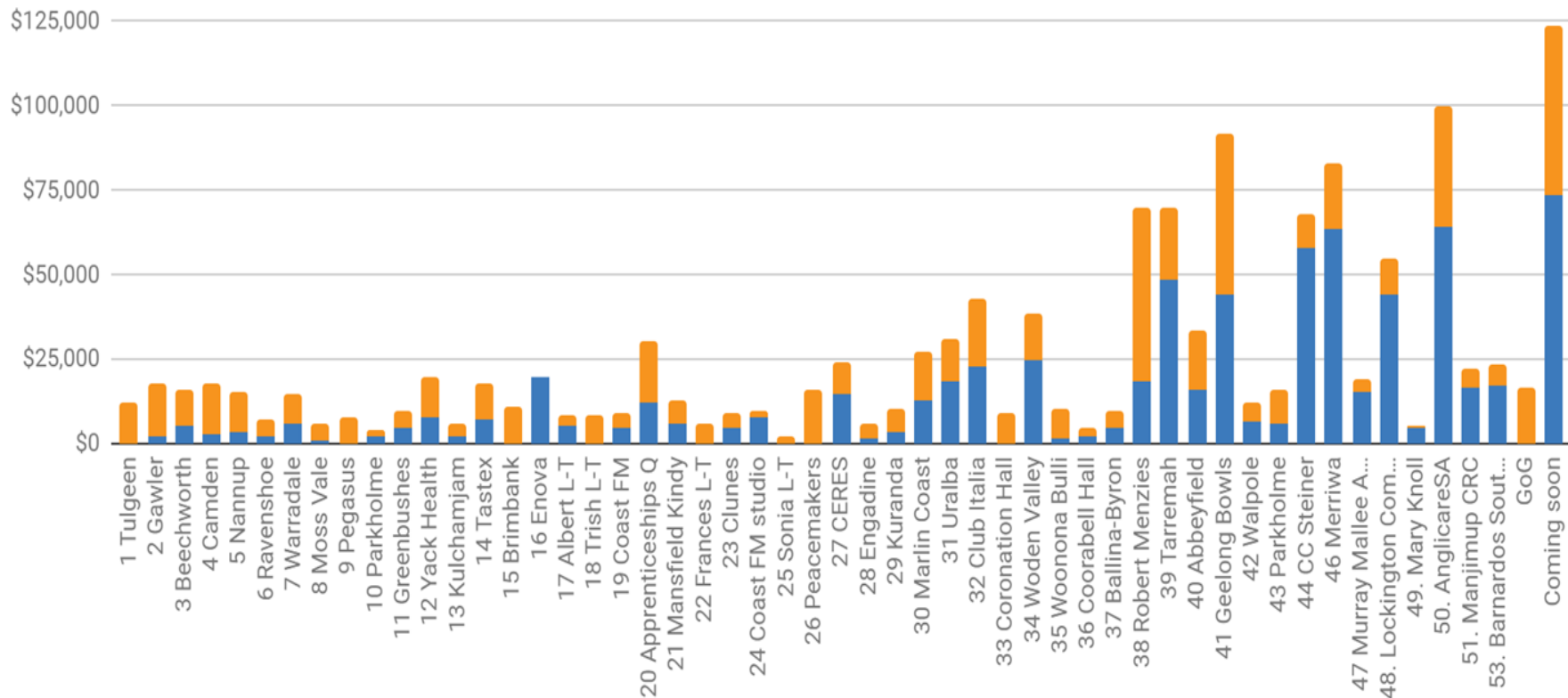
Achievements

- Total loaned -
\$1,355,000
- 1,152 kW
- 51 completed projects across Australia
- **\$659,000** donations
- 3,447 tonnes of CO₂



Funding via new donations and loan repayments

■ New donations
 ■ Loan repayments



Eligible projects

- Solar PV systems
- Efficient A/C and heating
- Heat pump hot water
- Induction hot plates
- Lighting retrofits
- Electric vehicles
- A package of the above



Eligible organisations

- Non-profit and community organisations
 - Independent schools
 - Community service organisations
 - Community centres
 - Social enterprises
 - Community housing cooperatives
 - Sporting clubs
 - Childcare centres



Past projects - Project 46. Merriwa Industries

- Supported employment enterprise in Wangaratta
- 99.5kW solar installation
- Goulburn Valley Community Energy and Wangaratta Landcare and Sustainability



CORENA

Project 53. Barnardos South Coast Children's Family Centre

- Family support, early learning, foster care, community building and bushfire recovery support for vulnerable families in the Shoalhaven region of New South Wales.



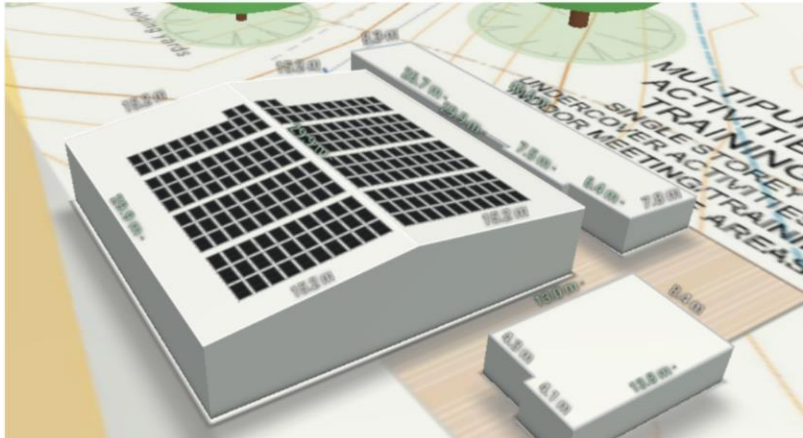
CORENA

Community Housing Providers

- Anglicare
SA/Believe Housing,
SA
- Lockington
Community Care
Committee, Vic
- Abbeyfield
Koorringal, NSW



Project 54. Mansfield Autism Statewide Services - now fundraising



Project fund – coming soon projects

This is the current balance of the revolving energy fund including loan repayments and donations. Our target for current projects is **\$138,288**.

\$48637



Why donate to a CORENA project?

- Practical proven technologies that just need widespread adoption
- Help a **charity or community organisation reduce their energy costs**
- You can choose which project you donate to
- Your donation is used over and over again. **\$100 donated to our first project has now achieved over \$450 in impact**



Community Energy Groups

- Are there non profits or community energy projects that **need a loan** in your local community?
- **Start your own revolving energy fund** - we are happy to share experiences.
- **Promote us** through your networks.



Keep in touch

- corenafund.org.au
- Project E-news
- Donor E-news
- Facebook
- Instagram
- LinkedIn

